

Reception 2025 Open Evening





We will share with you this evening what it is like to be a pupil and parent at Park Spring Primary.





Park Spring's Golden Thread

Reading is the master skill of our school, and we will use every opportunity to develop children's vocabulary and spoken language.



Park Spring's Golden Thread

All children at Park Spring Primary will be provided with the **right course** through a **mastery** curriculum.



Park Spring's Golden Thread

In achieving together through our **inclusive** practice we will ensure that the bottom 20% of pupils and SEND children achieve well, by providing additional support to catch up.



Park Spring's Golden Thread

Through the **aims** of the school, children will be given the opportunity to develop those personal skills to be successful in life-being **happy, confident, resilient and caring**. We will also provide opportunities for **teamwork and** development of **mutual respect**.



Park Spring's Golden Thread

Children will develop a pride in themselves and our school. Developing a commitment to **community in which we live**, celebrating commonalities and valuing **diversity**.

School Council

- ▶ <https://parkspringprimaryschool.sharepoint.com/:v:/s/ParkSpringTeam/EX28sL-m6qhMlcbsCn0-sNUBAts44Jy-ELHgbRIDV1jZQA?e=MjcrQu&nav=eyJyZWZlcnJhbEluZm8iOnsicmVmZXJyYWxBcHAiOiJTdHJlYW1XZWJBcHAiLCJyZWZlcnJhbFZpZXciOiJTaGFyZURpYWxvZy1MaW5rliwicmVmZXJyYWxBcHBQbGF0Zm9ybSI6IldlYiIsInJlZmVycmFsTW9kZSI6InZpZXcifX0%3D>



Opportunities for your child during their time at Park Spring

Residential throughout KS2



A wide range of sporting clubs and sporting events





Cultural experiences





Forest School



Commando Joe's



High quality learning environment



Provision in Reception

2 Reception classes

**RA – Miss Brearey (Monday & Tuesday)
Mrs Fotherby (Wednesday to Friday)**

RB – Miss Horner

Reception children have their own class base during registration and whole class teaching times. They share the provision during 'activities and choosing' time. This is all within one open-plan classroom.

The Reception children share the outdoor provision with our Nursery children. They have free access to the outdoor provision during 'activities and choosing' time.

Educational offer

- Daily Phonics, Maths and Topic sessions
- Group time sessions
- Story times
- PE / dough disco/ letter formation sessions
- Reading practice sessions
- Weekly writing and Maths activities with an adult
- Child-initiated play throughout the day (indoor and outdoor)

Learning in Reception







ng nk a e i o u
h ng nk a e i o u
r or ur er ov oi ear air

Home

1 one

2 two shoes

3 three

4 four kittens

5 five fish

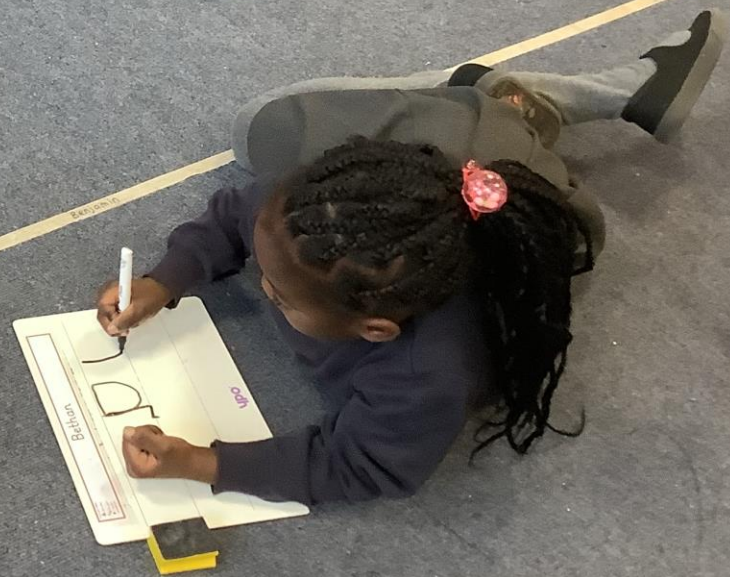
6 six apples

Lily Smith

Roman

Halle

Lucan



Isabelle

George

Roman

Benjamin

2023

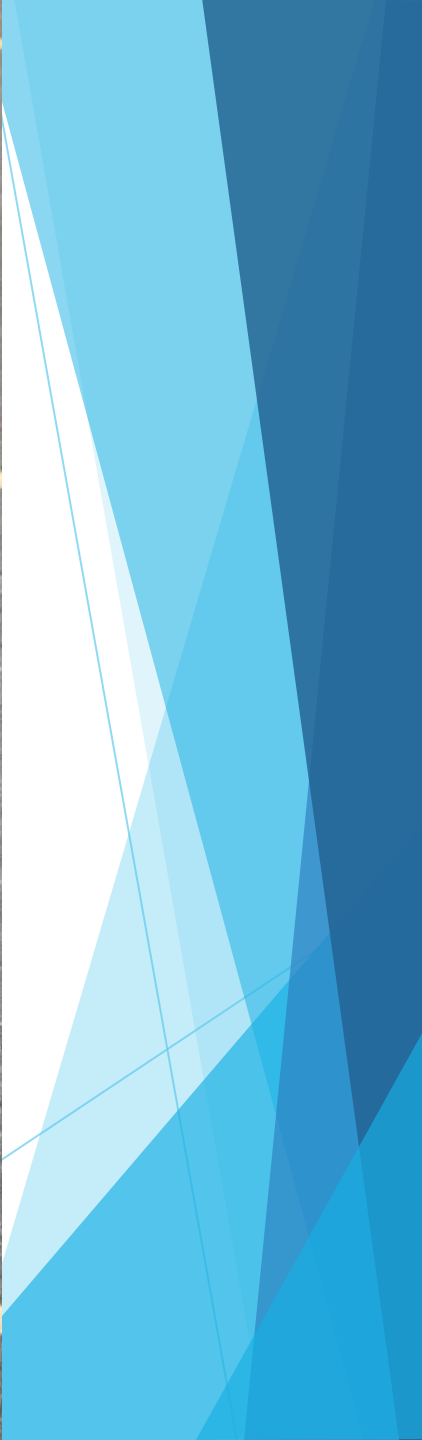
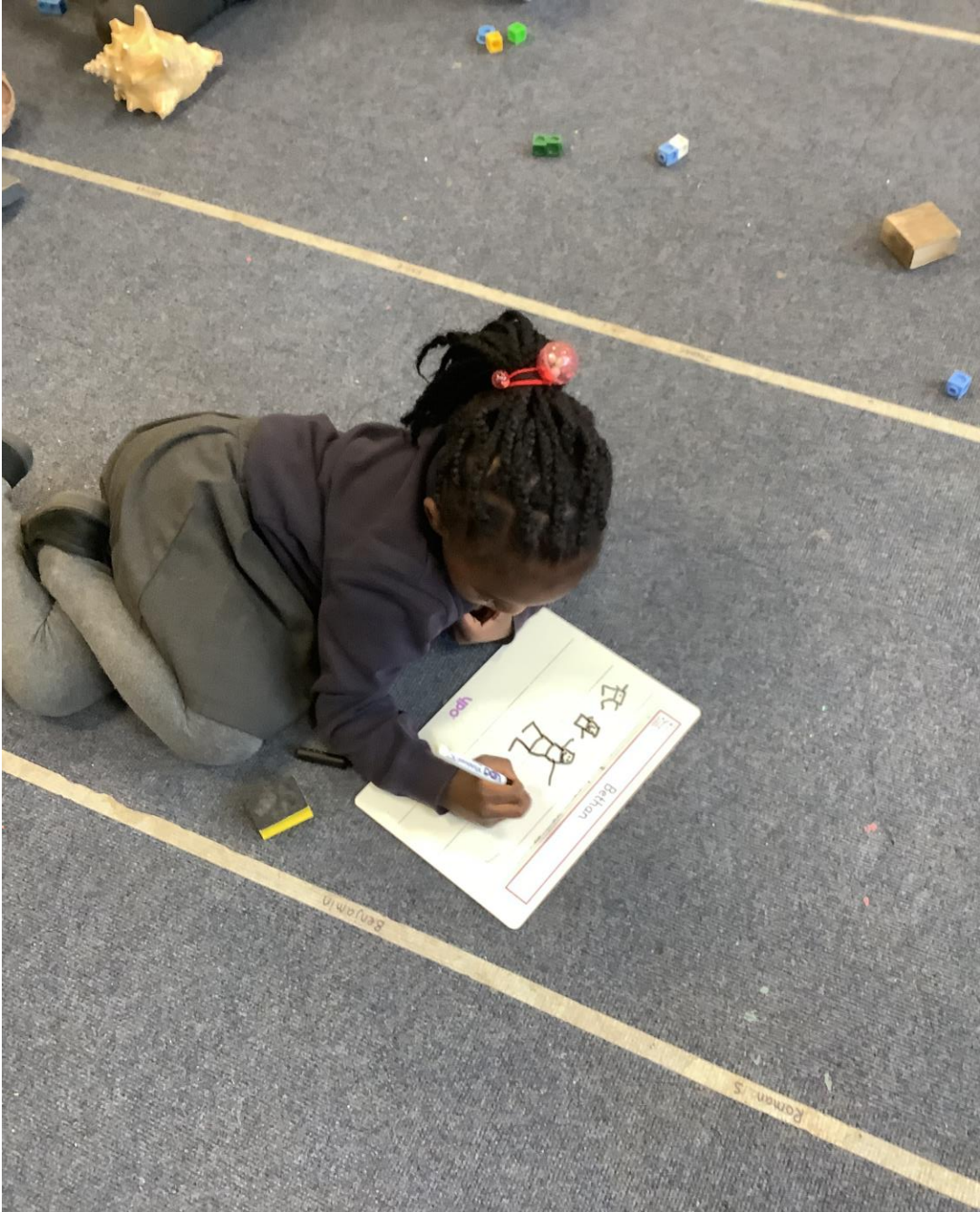












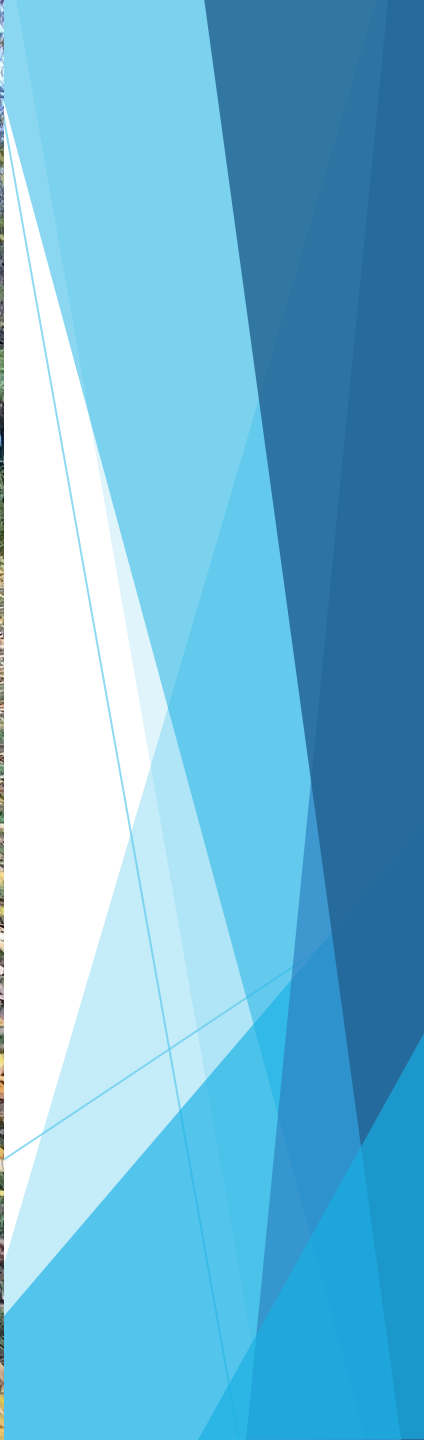
















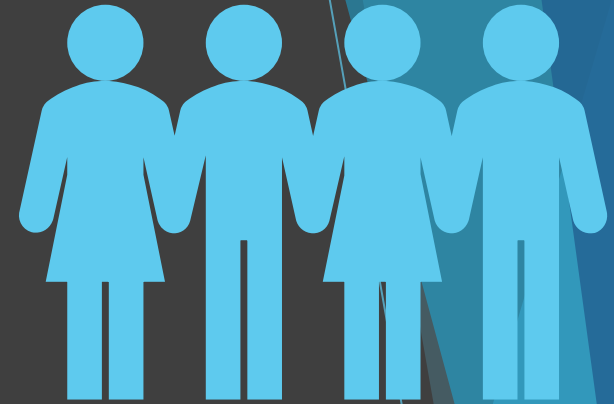




Reception experiences

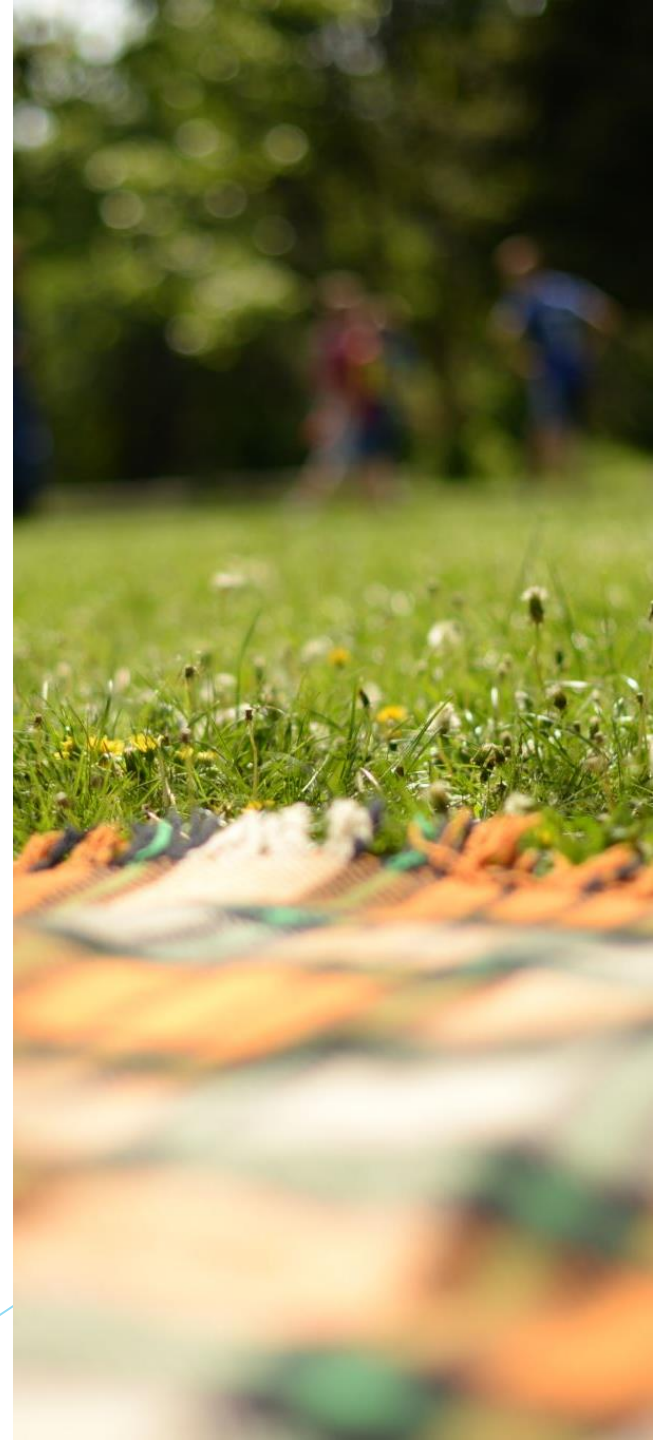
Visits and Visitors

- We will go on a range of outings in the local area and trips, to enhance children's learning and provide a stimulus for a new topic or project. We will also get visitors into school to support this work.
- If you have any special skills we could use in school, please let us know!
- Each half term we will have a stay and play session. These are usually at 8.45-10.00 or 2 – 3.15. We try to vary the days to accommodate different working patterns.
- Roll up and read weekly.
- All parents/carers/grand-parents welcome!
- Please see the school website and newsletters for photographs and updates on what the children have been learning!



Tapestry Learning Journey

- We keep an online record of your child's development in the form of a 'Learning Journey' on the Tapestry App. We will make observations of learning and include photographs and videos.
- We recognise the importance of working with you, as you are a teacher for your child. Your child learns so much outside of school and we need to see the child as a 'whole'.
- Parents and families can also publish their own photographs, videos and messages for us. These could be of days out, WOW moments, home learning and special events.





0123456789



Park Spring Primary

Open Evening

We would like to invite families of the children who will be starting Reception in September 2025 to our Open Evening on

Thursday 7 November 2024 @ 6pm

We would also like to invite you to have a guided tour with our Senior Leadership Team on the following dates at 9.30am and 2pm:

Wednesday 13th November

Thursday 14th November

Monday 18th November

Friday 22nd November

Please contact a member of our friendly office staff to book your slot for either event on

0113 2552526 or email

office@parkspringprimary.co.uk





▶ **Lunchtimes at
Park Spring**

Lunchtimes at Park Spring

School meals are prepared fresh on site daily. The majority of the meals are cooked from scratch by Shirley and her team. They meet the School Food Standards and are nutritionally balanced. Food served must meet national nutritional standards.

A school lunch is **FREE!** All children in Reception, Year 1 and Year 2 are entitled to a free school meal. This is different to means tested free school meals.

Packed Lunches prepared at home can be consumed at school – we encourage healthy choices. Healthy Packed Lunch guidance will be sent to you via email.

Food in school

Milk and fruit is provided daily for your child. When your child turns 5, you will have to start paying for their milk. The office will let you know the details when that time comes!

Water is readily available throughout the day. We provide your child with a water bottle when they start Reception. Subsequent bottles are available to purchase through ParentPay if needed.

Water consumption during the school day is encouraged. Bottles will be kept in school and cleaned daily.

SEND Team

(Special education needs and disabilities)



sencoteam
@parkspringprimary.co.uk

Breakfast Club

Mrs Holl



wholl@parkspringprimary.co.uk

7.30 - £4.50

8.15 - £2.25

(Price per day. Subject to change in
September)

After School Club

Miss Brook



sbrook@parkspringprimary.co.uk

Monday to Thursday **3.15-6.00 - £12** Friday

3.15-5.30 - £10

(Price per session. Subject to change in
September)

Parent View – October 2024

- ▶ **98%** of parents who completed the survey say their children are happy at this school.
- ▶ **100%** of children feel safe at this school.
- ▶ **98%** of parents feel their children do well at this school.
- ▶ **What are our greatest strengths?**
- ▶ “Pupil-centred.”
- ▶ “Engaging curriculum.”
- ▶ “Welcoming, friendly, loving staff - we feel so cared for.”
- ▶ “As a school you have helped both our children grow – not only educationally but also as people.”
- ▶ “Everyone in the school cares.”
- ▶ “Your wonderful staff!”

Further information

I will send this presentation, uniform policy and additional information to you via email.

If you have any questions, please ask!

You can also email me at
admissions@parkspringprimary.co.uk

Additionally, you can call me at school on 0113
2552526.

Thank you!

