



**Friday 19th April 2024**

**Absence Reporting** Please report your child's absence to the school office via telephone or via text message to **07891 274 260**

**SCHOOL DAY REMINDER**

Please can we remind families and pupils that the normal school day begins at **8.55am** and the gates will open automatically at **8.45am** (no need to press the buzzer). If the gates do open for children in boosters, visitors or staff before this time please remain at the gates and do not enter the playground. Many thanks



**SPRING 1 & 2 DIARY DATES**

Please find below a list of events that will be taking place during this term.

- 25.04.2024—Y5 Grinton Lodge**
- 25.04.2024—Y6 Weight & Height**
- 06.05.2024—May Bank Holiday—School Closed**
- 21.05.2024—Reception & Year 6 Photos**
- 24.05.2024— May Half Term**
- 03.06.2024—School Opens**
- 20.06.2024—Sports Day**
- 28.06.2024—FOPS Summer Fayre**
- 22.07.2024—Training Day**
- 23.07.2024—Training Day**
- 23.07.2024—School Closed for Summer**



**WELCOME BACK**

Welcome back to all our families, we hope you have had a lovely break. There will be lots of exciting events planned for the children over the Summer term please make sure you are reading your emails and texts. We hope the children have enjoyed their first week back, all the staff have had a lovely week.



**RECEPTION 2024**

If your child has received a place for Reception in September. Please call the office to ensure you have accepted or declined the place. 01132552526.



**YEAR 1**

Year 1 enjoyed a trip to Yorkshire Wildlife Park this week - our favourite animals were the red pandas, polar bears and the giraffes! The trip will help with teaching our science topics on animals, in English where will be writing animal poems and DT topic where we make our own 'Bonkers Zoo'. Watch this space for more exciting animal news!

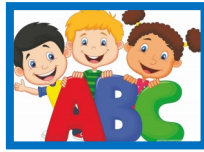


**WATER BOTTLE REMINDER**

If your child/ren need a new school water bottle because theirs is lost or broken, these are chargeable on Parent Pay at £1.15



## NURSERY



Welcome back to another busy term !  
 Nursery were very excited to be back at school and couldn't wait to get involved with all the activities on offer. Yesterday we went for a Spring Walk to see all the changes that had been taking place since we were last in school. We saw lots of blossom on the trees and new flowers and heard lots of birdsong.

We are reading Jack and the Beanstalk so we have all planted a magic bean to see how tall they grow.



## RECEPTION



This week Reception have been learning about Spring. We are really lucky to have lots of outdoor space to explore and we went on a Spring hunt to find signs of Spring. We found blossom, flowers, insects and birds but we couldn't find a lamb! We then went for a walk around our school and used our senses to listen to the sound of the birds, feel the sun on our faces and see all the signs of Spring in the environment.



## LUNCH MENU CHANGES

You should have received our communication regarding the NEW school meal ordering system which starts on Monday 22 April 2024 and an email from SchoolGrid with your log in details.

Lunches for the school will continue to be provided by Leeds City Council and ordered using the platform **SchoolGrid**.

When ordering meals through SchoolGrid they can be pre-ordered and paid for **up to 8:50am on the day!** However it is highly recommended that you pre order meals as far in advance as possible.

If you have not had a chance to place an order in time, your child must **bring a packed lunch into school with them**.

If a child is not in school by 10.15am we will remove their lunch choice to avoid charges and wasted food.

Where a child arrives after 10.15am and the require a school dinner, they will automatically only be able to order the sandwich option on the menu for that day. Please see full school menu [here](#). If your child does not like the sandwich option you will need to bring them a packed lunch.

If you have any queries please **email** office@parkspringprimary.co.uk



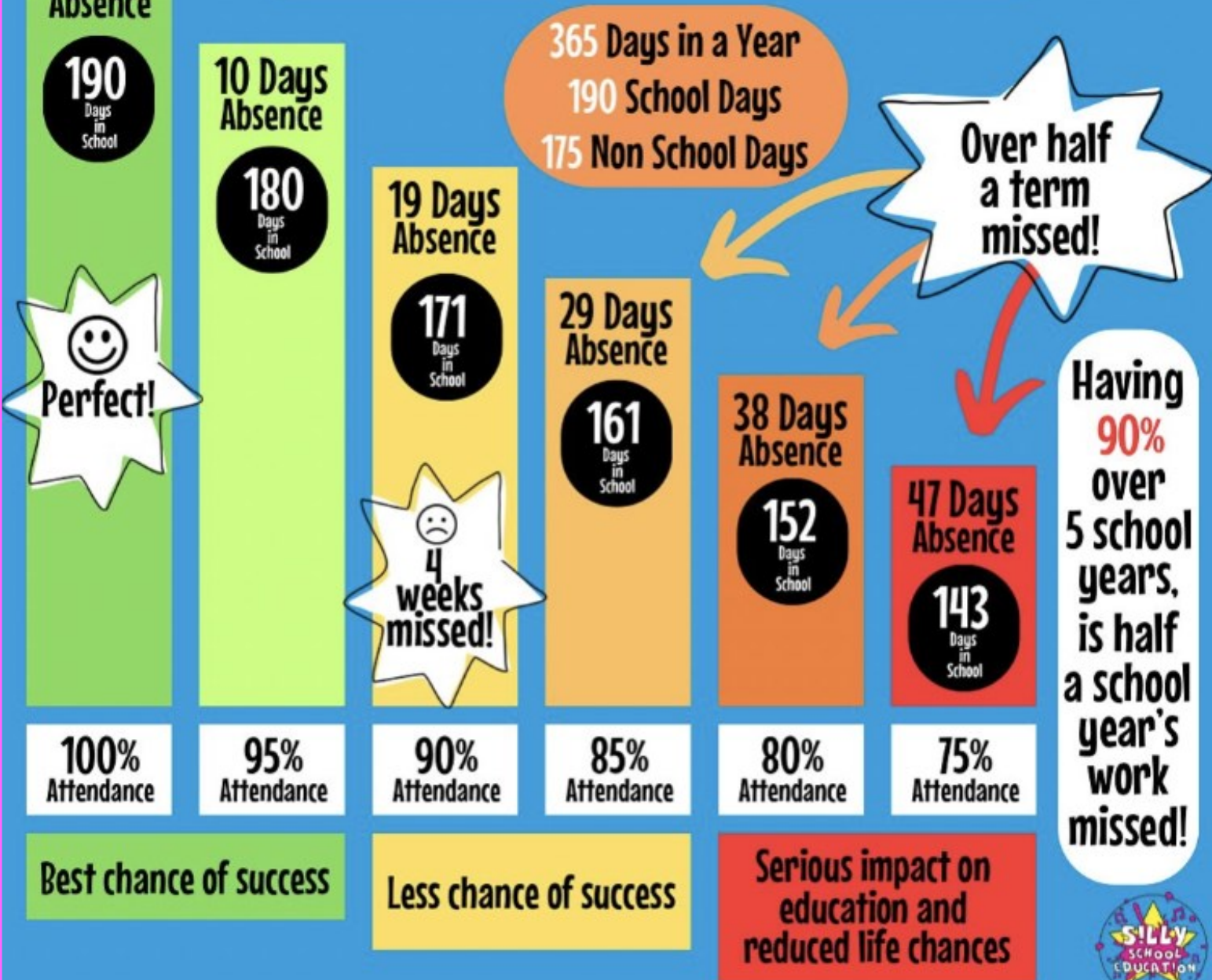


## ATTENDANCE

Regular attendance and being at school on time gives your child the best chance of success. Now we have started a brand new term, we can all try and achieve 100% attendance. Children can come to school with minor illnesses, if you are unsure whether you can send your child to school, please follow the link which will lead you to some guidance <https://www.nhs.uk/live-well/is-my-child-too-ill-for-school/>



## How Does School Attendance Affect a Child's Learning?







## Summer Kids' Clothes Baby to 12-13yrs Pop-up Event



**Saturday 20th April 2-5pm**  
at Pudsey Community Project



Clothes swaps/Cash/Card/Food Donations appreciated  
if you're able to give a little to support the work of  
Pudsey Community Project  
Thank you!



Reduce Reuse  
Kids' Clothes

**Open term-time:** Mon to Sat 10am-12noon and Wed 6-8pm  
**Find us:** Pudsey Community Project, Fartown, LS28 8LP  
[www.facebook.com/reducereusekidsclothes](http://www.facebook.com/reducereusekidsclothes)  
[www.pudseycommunity.org.uk](http://www.pudseycommunity.org.uk)

Registered Charity No: 1191152 (England and Wales)



### AT THE HEART OF THE COMMUNITY

#### Welcome to Pudsey Community Project:

We are a hope-filled, community-based, volunteer-driven registered charity, and we would like to let you know more about what we do.

#### What we exist for:

Pudsey Community Project exists to transform Pudsey and its surrounding areas with and for the local community, especially for those who are most disadvantaged and vulnerable.

#### Where we work:

Our base is in Pudsey, between Leeds and Bradford, but we cover an area of around 20,000 households - Pudsey, Calverley, Farsley, Swinnow, Tyersal, Rodley and Woodhall.



#### Food support

We started in March 2020, providing emergency food aid to households in outer west Leeds. Through Pudsey Foodbank we still offer emergency food parcels with six day-a-week capability but have also developed Pudsey Community Pantry to offer more sustainable food support to over 100 households each week.