



Park Spring Primary School

'Achieving Together'



Headteacher: Mrs R Horan
Swinnow Lane, Leeds LS13 4QT tel: 0113 2552526 email: office@parkspringprimary.co.uk

Friday 22nd December 2023

Absence Reporting Please report your child's absence to the school office via telephone or via text message to **07891 274 260**

SCHOOL DAY REMINDER

Please can we remind families and pupils that the normal school day begins at **8.55am** and the gates will open automatically at **8.45am** (no need to press the buzzer). If the gates do open for children in boosters, visitors or staff before this time please remain at the gates and do not enter the playground. Many thanks



MERRY CHRISTMAS EVERYONE!

We hope you all have a fantastic Christmas and a Happy New Year. We have had a brilliant time on the lead up to Christmas. We have seen Year 6 go on their residential to Dobroyd, Year 3 have had a drumming performance in the hall and Year 1 and 2 gave 2 amazing Christmas performances.

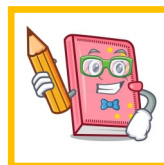


This week saw the beginning of the week nursery's Christmas party, we were all served Christmas lunch by Mrs. Horan and Mr. Barker and Nursery and Reception gave 2 amazing Christmas Performances!

Thursday saw our KS1 recognition assembly and all the classes Christmas Parties! We finally rounded off this very busy term with KS2 singing around the Christmas tree our KS2 Recognition Assembly and on Friday afternoon we had a whole school assembly with some amazing singing and even the staff choir entertained the children!

Thank you to all the parents and carers for keeping up with all the different things to remember over the last few weeks, the children have had an amazing time! The staff are now off for a large lie down!! Merry Christmas everyone!!!

SPRING 1 & 2 DIARY DATES



Please find below a list of events that will be taking place during this term.

- 22.12.2023—Christmas Break
- 08.01.2024—School Opens
- 08.01.2024—Y5 Yorvik
- 18.01.2024—American Diner Lunch Menu
- 26.01.2024—Training Day
- 03.02.2024—KS2 Pantomime
- 09.02.2024—February Half Term
- 19.02.2024—School Opens
- 25.04.2023—Y5 Grinton Lodge

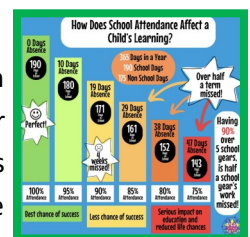
YEAR 5 YORVIK

Year 5 go to Yorvik on the first day back after Christmas—please log onto Parent Pay, sign and pay for your child to go on this amazing educational trip.



ATTENDANCE

If your child is going to be absent from school then please text this number **07891274260**. Please note that this phone will not be answered for phone calls. This is the last week of last years attendance report for the week ending **15th December 2023**



SCHOOL GATES OPEN FOR ALL TO ENTER AT 8.45AM, PLEASE DO NOT SEND YOUR CHILD TOO EARLY, THEY WILL BE STOOD OUTSIDE WHATEVER THE WEATHER.

Nursery	93.65%	YEAR 3a	91.75%
RECEPTION a	88.8%	YEAR 3b	94.7%
RECEPTION b	90.85%	YEAR 4a	94%
YEAR 1a	92.8%	YEAR 4b	88.8%
YEAR 1b	93.15%	YEAR 5a	94.65%
YEAR 2a	88%	YEAR 5b	93.2%
YEAR 2b	95.35%	YEAR 6a	93.3%
		YEAR 6b	86.75%
Totals	92.05%		



Park Spring Primary School

'Achieving Together'



Swinnow Lane, Leeds LS13 4QT

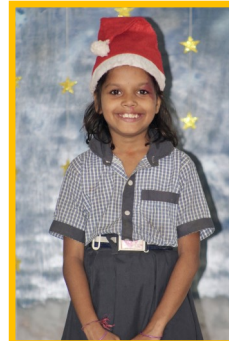
Headteacher: Mrs R Horan
tel: 0113 2552526

email: office@parkspringprimary.co.uk

LOVE THE ONE



Our sponsored children in India, through the Love the One charity, would like to wish their Park Spring Primary family Seasons Greetings and would like to thank you all for your participation in the fundraising we do at school.



Your support has enabled them to achieve so much over the past six months. Please [click here](#) to find out how our support has contributed to their learning journey.

WATER BOTTLE REMINDER

If your child/ren need a new school water bottle because theirs is lost or broken, these are chargeable on Parent Pay at £1.15 each.



CAR PARK



Please **DO NOT** drive **into** the car park to drop or collect children. It is a health and safety issue and we do not want any accidents. Thank you.

PARENT PAY



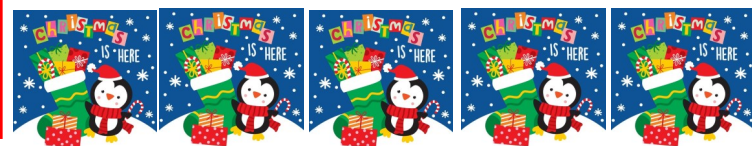
When you make a payment on Parent pay—Please can you make sure you add the payment to the basket rather than the yellow bank transfer button.

Using the basket makes the transaction on our system much quicker and so we are able to process your payment faster.

RECEPTION



Reception classes are looking for empty cardboard boxes and plastic tubs to be brought in for the first week of next term if you have any please bring them to school.



AFTER SCHOOL CLUBS



As you know, we love to offer opportunities at our after school activity clubs to our pupils so that they can develop different skills. If there are any parents, carers or friends of Park Spring who would like to share their skills with a group of pupils from 3.15-4.15pm any day of the week then Mrs Fotherby would love to hear from you!

This could be to run a one-off session or a series of sessions on anything from crafting to karate! If you have a skill that you would like to share, please email sports@parkspringprimary.co.uk and we would love to welcome you in school!

RECEPTION CHRISTMAS PERFORMANCES



On Wednesday Nursery and Reception gave 2 amazing performances to parents and carers in the hall. The children were all superstars and sang and acted beautifully! They learnt 9 songs off by heart and learnt their lines perfectly! There was not a dry eye in the house when the children sang 'On a Starry Night'. Big memories made and everyone left feeling very Christmassy!





AMERICAN DINER MENU

THURSDAY 18th JANUARY 2024

BUILD A BURGER!

Start with a soft burger bread bun

Fill with

BEEFBURGER OR VEGGIE MEATBALL SUB

Then add your extras

**Cheese Slices, Crispy Iceburg Lettuce,
sliced tomatoes, sliced onion**

Finish off with

Tomato Ketchup or Mayonnaise

Smoky Fries

Crunchy Coleslaw

**Chocolate Strand Cookie, Fresh Fruit or
Yoghurt**





LEEDS RHINOS VS. WAKEFIELD TRINITY BOXING DAY - 11:30AM KICK OFF

AMT HEADINGLEY STADIUM

Ticket Prices

Standing

£20
Adult

£15
Concession

£5
Junior

Seats

£25
Adult

£20
Concession

£10
Junior

2023 & 2024 Members can take advantage of a ticket discount, with member prices starting from £17 for adults, £12 for concessions and £5 for juniors
=discount expires at midnight on 25th December=

[Tickets.therhinos.co.uk](https://tickets.therhinos.co.uk)



24 Day Reverse Advent Calendar

23rd Nov Tin of tomatoes	24th Nov Tin of potatoes	25th Nov Bottle of squash	26th Nov Biscuits
27th Nov Tin of meat	28th Nov Pasta sauce	29th Nov Custard	30th Nov Tea/coffee
1st Dec Rice	2nd Dec Tin of soup	3rd Dec Baked beans	4th Dec Curry sauce
5th Dec Shower gel	6th Dec Stuffing	7th Dec Kidney beans	8th Dec Tin of peas
9th Dec Crisps	10th Dec Long life milk	11th Dec Tin of tuna	12th Dec Shampoo
13th Dec Tin of fruit	14th Dec Tin of carrots	15th Dec Pasta	16th Dec Chocolate

Each day add an item to a box.

**Then bring to Pudsey Community Project, Fartown,
LS28 8LP on the week commencing 18th Dec.
Opening times: Mon-Sat 10am-12pm or Weds 6-8pm**

Is your child due to start primary school in 2024?



Applications are open for Reception places to start in **September**

You can apply online until **15 January 2024**

Before you apply, find out more at
www.leeds.gov.uk/apply 

- Learn about the admissions process
- Research schools so you can list your 5 preferences
- Read each school's admissions policy
- Understand where your child might be offered a place
- Check if your home address gives you priority



Call us on
0113 222 4414

Watch our quick
guide to school
admissions

