



Friday 8th December 2023

Absence Reporting Please report your child's absence to the school office via telephone or via text message to **07891 274 260**

SCHOOL DAY REMINDER

Please can we remind families and pupils that the normal school day begins at **8.55am** and the gates will open automatically at **8.45am** (no need to press the buzzer). If the gates do open for children in boosters, visitors or staff before this time please remain at the gates and do not enter the playground. Many thanks



AUTUMN 2 DIARY DATES

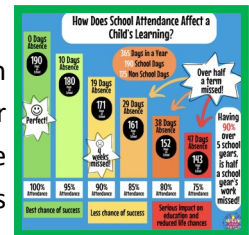
Please find below a list of events that will be taking place during this term.



- 11.12.2023—Y3 Drumming Performance
- 11.12.2023—Y6 Dobroyd Residential
- 11.12.2023 Rec—Eyesight/height & weight
- 12.12.2023 Rec—Eyesight/height & weight
- 13.12.2023 Rec—Eyesight/height & weight
- 13.12.2023—Y1 & Y2 Christmas Performance
- 14.12.2023—Y2 Parent Reading Event 2.45pm
- 15.12.2023—Nursery Christmas Stay & Play 9-10am
- 18.12.2023—BOW Nursey Christmas Party
- 19.12.2023—Christmas Lunch Menu
- 20.12.2023—Nursery & Reception Christmas Performance
- 21.12.2023—Christmas Parties
- 22.12.2023—KS2 Carols round the tree
- 22.12.2023—Christmas Break
- 08.01.2024—School Opens
- 08.01.2024—Y5 Yorvik
- 26.01.2024—Training Day
- 03.02.2024—KS2 Pantomime
- 09.02.2024—February Half Term
- 19.02.2024—School Opens
- 25.04.2023—Y5 Grinton Lodge

ATTENDANCE

If your child is going to be absent from school then please text this number **07891274260**. Please note that this phone will not be answered for phone calls. This is the last week of last years attendance report for the week ending **24th November 2023**



THE SCHOOL GATES OPEN AT 8.45AM. EVEN IF IT IS RAINING CHILDREN WILL STILL NEED TO WAIT AT THE GATE UNTIL THIS TIME.

Nursery	89.65%	YEAR 3a	87.9%
RECEPTION a	91.2%	YEAR 3b	93.7%
RECEPTION b	93.9%	YEAR 4a	89.6%
YEAR 1a	95.2%	YEAR 4b	96.8%
YEAR 1b	93.6%	YEAR 5a	94%
YEAR 2a	94.7%	YEAR 5b	97.75%
YEAR 2b	96%	YEAR 6a	97.3%
		YEAR 6b	85.7%
Totals	93.2%		

YEAR 3 DRUMMING



On Monday 11th December Year 3 will be performing their drumming skills to the Y3 parents in the hall at 2.30pm. Parents can enter through the hall door, no tickets required.

Year 2 will be invited to watch too as inspiration for the following year.

CHRISTMAS JUMPER DAY

A big thank you to everyone who wore a Christmas Jumper today, you all looked amazing! The donations for Save the Children will be counted up and the total raised will be announced in next weeks newsletter!



BOTTOM GATE



If you are late to school and the bottom gate is locked, you must come back out via the top gate, please do not disturb classes to ask to be let out.



Park Spring Primary School

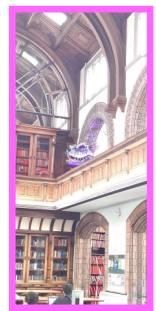
'Achieving Together'



Headteacher: Mrs R Horan
Swinnow Lane, Leeds LS13 4QT tel: 0113 2552526 email: office@parkspringprimary.co.uk

RECEPTION LIBRARY VISIT

What a fantastic trip we had to Leeds Library on Wednesday. We went on a train into Leeds City Centre and had a story, looked at all the books and had a look around the amazing building. All the children were so well behaved and a credit to Park Spring.



SANTA CLAUS CAME TO TOWN

A big thank you to FOPS for decorating the school for the big man's visit today!

All the classes had a festive class photo and we are excited for this afternoon at 3.30pm when the children will be able to meet Santa and participate in some crafts.



PARENT PAY

When you make a payment on Parent pay—Please can you make sure you add the payment to the basket rather than the yellow bank transfer button.

Using the basket makes the transaction on our system much quicker and so we are able to process your payment faster.



COLD WEATHER

Now that it is getting colder, please ensure that children bring a coat with them each day with their name clearly labelled. Hats, gloves and scarves are also ideal for the smaller children. If the weather is very rainy or icy, children can wear their wellington boots to school and bring their school shoes to change into once they have arrived.



ELECTRIC SCOOTERS

Under no circumstances should electric scooters be brought onto the school premises. Privately owned e-scooters are restricted for use on private land only with permission from the land owner. If caught riding an e-scooter, fines you may receive can include a Fixed Penalty Notice for no insurance with a £300 fine and six penalty points.



YEAR 5

Year 5 are raising money for their year 6 leavers hoodies and after the Christmas break, they are looking for unwanted gift sets donations to raffle.



If you have any unwanted gift sets that you are willing to donate, please bring to school after the school holidays.

RAFFLE TICKETS

Next week is the last chance to buy FOPS raffle tickets as the draw will take place on **Friday 15th December**



YEAR 3 DRUMMING PERFORMANCE

This year our Year 3 classes have been having drumming lessons with Mr G and we would like to share what we have learnt so far with you



**Please join us in the School Hall on
Monday 11th December 2023
@ 2.30pm for our performance**

Parents are invited to stay after for our reading event and we will share the books we have studied over the last two half terms and the children's writing that they have produced.





LEEDS RHINOS VS. WAKEFIELD TRINITY BOXING DAY - 11:30AM KICK OFF

AMT HEADINGLEY STADIUM

Ticket Prices

Standing

£20
Adult

£15
Concession

£5
Junior

Seats

£25
Adult

£20
Concession

£10
Junior

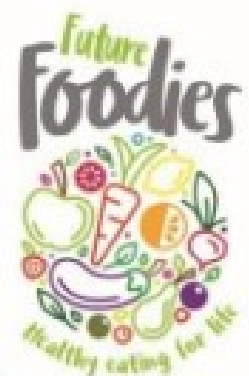
2023 & 2024 Members can take advantage of a ticket discount, with member prices starting from £17 for adults, £12 for concessions and £5 for juniors
=discount expires at midnight on 25th December=

[Tickets.therhinos.co.uk](https://tickets.therhinos.co.uk)



CHRISTMAS DINNER MENU

HO HO HO



ON: TUESDAY 19TH DECEMBER 2023

WE ARE SERVING UP
A FESTIVE FEAST

Menu

Roast Turkey with all the trimmings

Yorkshire Pudding, Sage and Onion Stuffing & Mini Pork Sausage

or

Vegetarian Sausage with all the trimmings (v)

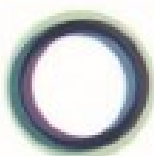
Yorkshire Pudding, Sage and Onion Stuffing & Mini Vegetarian Sausage (v)

Mashed and Roast Potatoes

Seasonal Vegetables

Festive Christmas Dessert

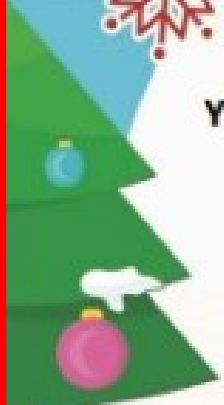
Novelty Ginger Biscuit with Ice Cream & Sprinkles



Catering
Leeds



Merry
Christmas!



Christmas Events

8 DECEMBER 2023

CHRISTMAS JUMPER DAY
SANTA PARKS HIS SLEIGH AT SCHOOL
3.15PM - 6PM SANTA IS COMING

13 DECEMBER 2023

YEAR 1 & 2 CHRISTMAS PERFORMANCES
@ 9.15AM & 2.15PM

19 DECEMBER 2023

WHOLE SCHOOL CHRISTMAS LUNCH DAY

20 DECEMBER 2023

NURSERY & RECEPTION CHRISTMAS
PERFORMANCES
@ 9.15AM & 2.15PM

21 DECEMBER 2023

CLASS CHRISTMAS PARTIES (AFTERNOON)

22 DECEMBER 2023

YEARS 3 - 6 CHRISTMAS CAROL SERVICE
@ 9.15 AM

Age Restrictions for Social Media Platforms

What is the minimum age for account holders on these social media sites, apps and games?



7

Roblox

12

Fortnite

13

Twitter
Facebook
Instagram
Pinterest
Reddit
Snapchat
TikTok
WeChat
YouTube
Wink

16

LinkedIn
Flickr
WhatsApp
Tumblr

Ages specified by PEGI, platform user agreements or platform terms of service as of 27th July 2022.





24 Day Reverse Advent Calendar

23rd Nov Tin of tomatoes	24th Nov Tin of potatoes	25th Nov Bottle of squash	26th Nov Biscuits
27th Nov Tin of meat	28th Nov Pasta sauce	29th Nov Custard	30th Nov Tea/coffee
1st Dec Rice	2nd Dec Tin of soup	3rd Dec Baked beans	4th Dec Curry sauce
5th Dec Shower gel	6th Dec Stuffing	7th Dec Kidney beans	8th Dec Tin of peas
9th Dec Crisps	10th Dec Long life milk	11th Dec Tin of tuna	12th Dec Shampoo
13th Dec Tin of fruit	14th Dec Tin of carrots	15th Dec Pasta	16th Dec Chocolate

Each day add an item to a box.

**Then bring to Pudsey Community Project, Fartown,
LS28 8LP on the week commencing 18th Dec.
Opening times: Mon-Sat 10am-12pm or Weds 6-8pm**

Is your child due to start primary school in 2024?



Applications are open for Reception places to start in **September**

You can apply online until **15 January 2024**

Before you apply, find out more at
www.leeds.gov.uk/apply 

- Learn about the admissions process
- Research schools so you can list your 5 preferences
- Read each school's admissions policy
- Understand where your child might be offered a place
- Check if your home address gives you priority



Call us on
0113 222 4414

Watch our quick
guide to school
admissions



Leeds
CITY COUNCIL

