

Design Technology Year 3

Which is better pen and paper verses digital sketching?

3D slash is a online graphic software used for digital sketching.

Key features when using 3D slash include ...



1. The hammer tool removes one cube at a time .



2. The trowel tool rebuilds one cube at a time.



3. The chisel tool removes slices of cubes.



4. The wall tool rebuilds slices of cubes.



5. The drill tool removes a piece.



6. The spray tool paints the cube.



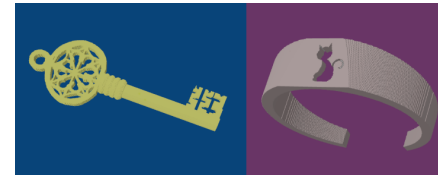
7. The numbered circles change the size of each tool.

What type of designers would use 3D slash?

8. Small businesses would use 3D slash to make logos.



9. Jewellers would use 3D slash to create designs of jewellery.



10. Architects would use 3D slash to create building designs.



Key vocabulary

Digital sketching— a drawing created using graphic software.

Logo- a symbol or small design used to identify a product or company.

Architects- a person who designs buildings.